



KIPFOLD 2800

Wide Format Document Folding System



Folding System Designed for
KIP 800 Color Series,
KIP 900 Color Series &
KIP 70 Series Print Systems



KIPFOLD 2800

Wide Format Document Folding System

SPEED, POWER & PRODUCTIVITY

Engineered for production folding with seamless integration to the KIP 800 Series, 900 Series and KIP 70 Series print systems. The KIPFold 2800 automates large format document finishing by providing folding and stacking in an efficient and compact design.



INTUITIVE DESIGN

- Automatic Title Block Detection
- Automatic Fold by Page Size
- Customized Fold Presets
- Advanced Technical Interface
- Full Bi-Directional Communication
- Superior Job Recovery Functionality
- KIP System K Software Integration
- Metric and Imperial Standard Size Folds

FOLD QUALITY & RELIABILITY

KIPFold 2800 with KIP System K Software integration provides seamless workflow to the KIP 800 Color Series, KIP 900 Color Series and KIP 70 Series Monochrome print systems.

KIPFold 2800 is built to exacting standards, featuring a solid steel frame and stainless steel feed guide with low static transfer system for consistent and reliable operation. High quality components, sensors, precision bearings and solid design ensure precision and accurate folding.

The KIPFold 2800 uses proven folding technology based on a high precision blade and roller design for high production print environments. KIPFold 2800 offers industry leading fold quality, exact fold delivery, precise packets, and crisp fan folded documents to the millimeter.



Portrait & Landscape Packet Styles

VERSATILE PRODUCTION

Prints are folded and stacked at maximum speed, allowing for easy document filing and distribution. A reliable and durable fold roller system ensures maximum packet accuracy. Flat output stacking is included as a standard feature. Users may conveniently select fold style preferences at their workstation before printing.

The KIP 2800 folding system features the flexibility to fold documents with precision, regardless of print orientation. Prints are accepted in either landscape or portrait format, allowing for fast and efficient folding operation.

KIPFold 2800 Features:

- Portrait & Landscape Packet Styles
- Integrated Flat Stacking – Up to 100 Sheets
- Offline Manual Folding
- Unlimited Length Fan Fold (*Optional*)



Standard Folding



Production Crossfold with Stacking

SYSTEM K SOFTWARE

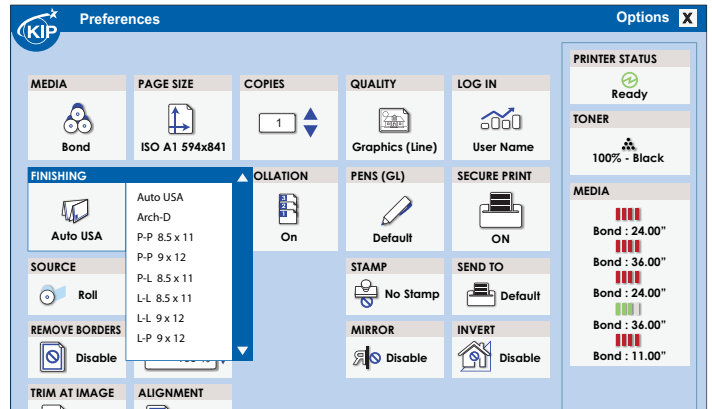
SYSTEM INTEGRATION

This unique integrated solution allows complete control of the folder and folding packets directly from all KIP Applications including the KIP Touchscreen, KIP ImagePro, KIP PrintPro.NET, KIP Windows and AutoCAD HDI drivers.

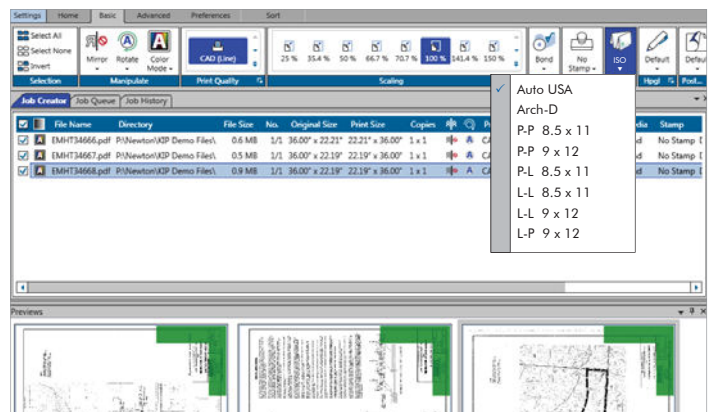
KIP System K Software allows all user levels to easily create and prepare prints for folding through the uniform software interface and application process.

KIPFold 2800 System K Software Features:

- Simplify custom folds with preset editor
- Print submission via PC and print drivers
- System error reporting through email notification
- Intelligent job recovery for accurate print accounting



Windows Driver Fold Packet Selection



PC, Browser, and Driver Folder Control



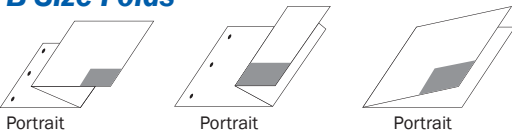
KIPFOLD 2800

Wide Format Document Folding System

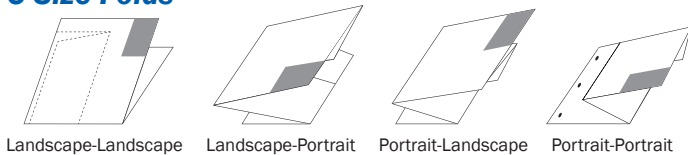
FOLD PACKET STYLES

The KIPFold 2800 does not compromise on folding styles, giving users the ability to switch quickly between folds without complex adjustments.

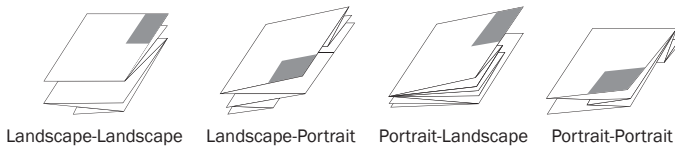
B Size Folds



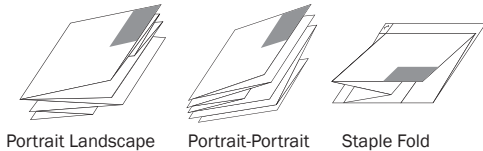
C Size Folds



D Size Folds



E Size Folds



FOLD STANDARDS

All folding standards come preset in System K Software, including:

ARCH Folds (Architectural)

US, North American standard for architectural print sizes to produce 8½" x 11" or 9" x 12" packets with no margins

ANSI Folds

Another informal standard for ANSI print sizes to produce these packet sizes:

ANSI A – packet width of 7.5" with a one-inch margin

ANSI B – packet width of 7.5" without a margin

ANSI C – packet width of 8.5" without a margin

Architectural



B - 18 x 12 Inches



C - 24 x 18 Inches



D - 36 x 24 Inches



E - 48 x 36 Inches

ANSI



B - 17 x 11 Inches



C - 22 x 17 Inches



D - 34 x 22 Inches



E - 44 x 34 Inches

COMPATIBLE KIP MODELS

The KIPFold 2800 system is compatible for full integration with the following KIP production systems:



800 Series

KIP 850 | 860 | 870 | 880 | 890
KIP 970 | 980 | 990



70 Series

KIP 7170 | 7570 | 7970
KIP 770 not compatible

www.KIP.com USA: Phone: (800)252.6793 | Email: info@kip.com Canada: Phone: (800)653.7552 | Email: info@kipcanada.com

KIP is a registered trademark of the KIP Group. All other product names mentioned herein are trademarks of their respective companies. All product features and specifications are subject to change without notice. Complete product specifications are available upon request. © 2017